

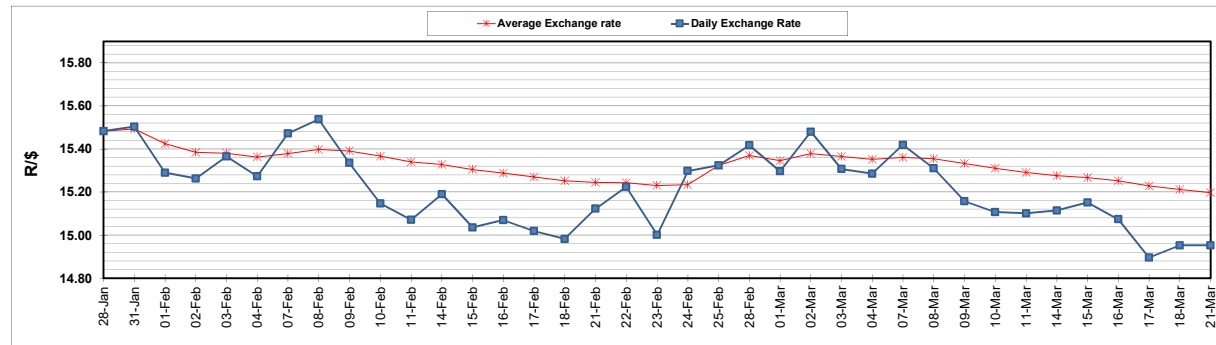
	PETROL 95 ULP	PETROL 93 ULP & LRP	DIESEL 0.05%	DIESEL 0.005%	ILL. PAR.
GAUTENG PUMP PRICE (SA c/l) AS FROM 02/03/2022	2,160.000	2,135.000	-	-	-
WHOLESALE PRICE (SA c/l) AS FROM 02/03/2022	-	-	1,948.880	1,955.280	1,318.688
SINGLE NATIONAL MAXIMUM RETAIL PRICE	-	-	-	-	1,690.000
BASIC FUEL PRICE - 21/03/2022 (SA c/l)	1,286.083	1,267.780	1,457.792	1,477.798	1,425.157
PRESS RELEASE CONTRIBUTION TO BFP 02/03/2022 - 21/03/2022 (SA c/l)	1,100.270	1,085.270	1,107.630	1,114.030	1,097.128
UNIT OVER/(UNDER) RECOVERY - 21/03/2022 (SA c/l)	(185.813)	(182.510)	(350.162)	(363.768)	(328.029)
AVERAGE BASIC FUEL PRICE 25/02/2022 - 21/03/2022	1,271.311	1,248.624	1,364.289	1,384.018	1,317.090
AVERAGE UNIT OVER/(UNDER) RECOVERY 25/02/2022 - 21/03/2022	(194.095)	(186.408)	(279.424)	(293.459)	(241.315)

### ANALYSIS MOVEMENT OF AVERAGE OVER/(UNDER) RECOVERY

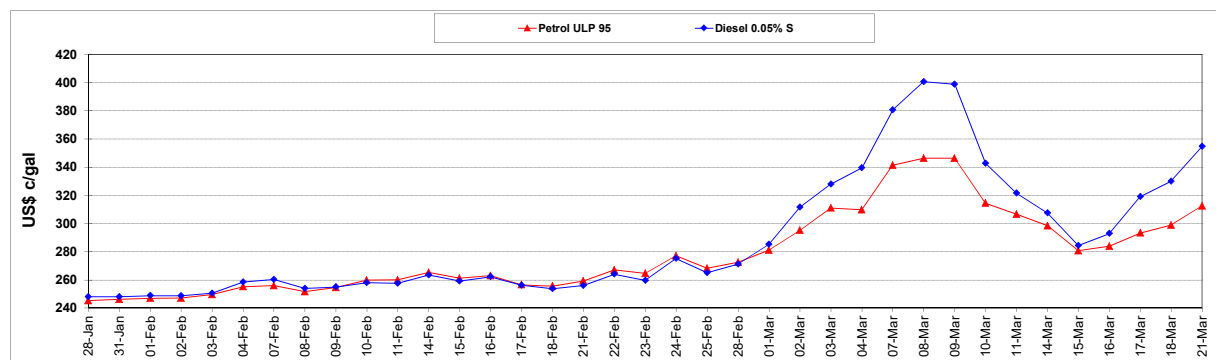
	PETROL 95	PETROL 93	DIESEL 0.05%	DIESEL 0.005%	ILL. PAR.
- MOVEMENT IN INTERNATIONAL PRODUCT PRICES	(197.232)	(189.489)	(282.791)	(296.874)	(244.565)
- MOVEMENT IN EXCHANGE RATE	3.137	3.081	3.367	3.415	3.250
AVERAGE UNIT OVER/(UNDER) RECOVERY 25/02/2022 - 21/03/2022	(194.095)	(186.408)	(279.424)	(293.459)	(241.315)

### R/\$ EXCHANGE RATE - (R/\$14.9525 - 21/03/2022)

#### EXCHANGE RATE USED IN BASIC FUEL PRICE



#### INTERNATIONAL PRODUCT PRICES OF BASKET USED IN BASIC FUEL PRICE



#### BASIC FUEL PRICE IN SA CENTS PER LITRE

